

# Demo Session

**D01 A Mobile Context Reactive User Interface**



**Augmented by Natural Language**

*Babak Hodjat, Siamak Hodjat, Nick Treadgold  
(iAnywhere Solutions)*

**D02 A Wearable System for Supporting Motorbike**



**Races - Suzuka 8 hours World Endurance  
Championship Race in July, 2004**

*Masakazu Miyamae, Yasue Kishino, Tsutomu Terada,  
Shojiro Nishio, Masahiko Tsukamoto, Keisuke Hiraoka  
and Takahito Fukuda (Osaka University, Kobe  
University, Westunitis Co.,Ltd.)*

**D03 Digitally Augmented Collectibles**



*Christian Metzger, Matthias Lampe, Elgar Fleisch,  
Oliver Zweifel  
(ETH - Swiss Federal Institute of Technology)*

**D04 Configurable Hotspots for Ubiquitous Interaction**



*Alejandro Jaimes, Jianyi Liu  
(FXPAL Japan, Fuji Xerox Co. Ltd.)*

**D05 Celadon: Infrastructure for Device Symbiosis**



*M. C. Lee, H.K. Jang, S.Y. Kim, Y.S. Paik, S.E. Jin, S. Lee,  
C. Narayanaswami, M.T. Raghunath, M. C. Rosu  
(IBM Ubiquitous Computing Lab, IBM T.J. Watson  
Research Center)*

**D06 GETA Sandals: Knowing Where You Walk To**



*Shun-yuan Yeh, Keng-hao Chang, Chon-in Wu, Okuda  
Kenji, Hao-hua Chu (National Taiwan University)*

**D07 Demonstration of Stable VoIP Communication  
over a Large Indoor Ad-hoc Network**



*Jun Hasegawa, Satoko Itaya, Akio Hasegawa, Peter  
Davis, Naoto Kadowki and Sadao Obana  
(ATR Adaptive Communication Research Labs.)*

**D08 μParts: Low Cost Sensor Networks at Scale**



*Michael Beigl, Christian Decker, Albert Krohn, Till  
Riedel, Tobias Zimmer (Telecooperation Office (TecO))*

**D09 HeadRacer: A Head Mounted Wearable**



**Computer with Ultrasonic Position Sensing**  
*Cliff Randell, Paul Duff, Mike McCarthy, Henk Muller  
(Department of Computer Science, University of Bristol)*

**D10 DTMap Demo: Interactive Tabletop Maps  
for Ubiquitous Computing**



*Masakazu Furuichi, Yutaka Mihori, Fumiko Muraoka,  
Alan Esenther, Kathy Ryall (Mitsubishi Electric, Japan,  
Mitsubishi Electric Research Laboratories, USA)*

**D11 Ubiquitous Network for Building and Home  
control With Ad-hoc Wireless and Plug & Play  
mechanism**

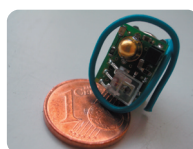
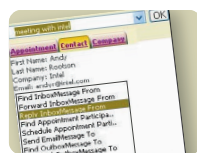


*Masanori Nakata, Noriyuki Kushiro, Toshiyasu Higuma,  
Naoyuki Hibara (Mitsubishi Electric, Japan)*

**D12 Development of Smart Navigation System  
"Cochira" for Customers in Railway Stations**



*Takeshi Nakagawa, Fuminori Tsunoda,  
Koichi Wakasugi, Sayaka Isojima, Isao Saito  
(EAST JAPAN RAILWAY, UCHIDA YOKO, Japan)*

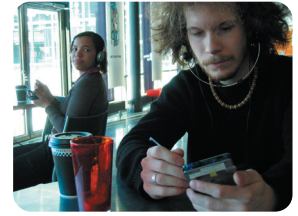
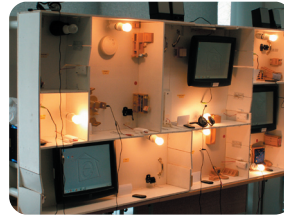


**D13** Push!Music:

D-13

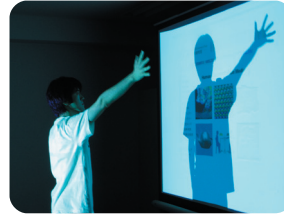
**Intelligent Music Sharing on Mobile Devices**

*Mattias Jacobsson, Mattias Rost, Maria Hakansson,  
Lars Erik Holmquist  
(Future Applications Lab, Viktoria Institute, Sweden)*

**D14** Context Photography on Camera Phones

D-14

*Mattias Rost, Lalya Gaye, Maria Hakansson, Sara  
Ljungblad, Lars Erik Holmquist  
(Future Applications Lab, Viktoria Institute, Sweden)*

**D15** eHome Specification, Configuration, and Deployment

D-15

*Ulrich Norbistrath, Priit Salumaa, Adam Malik, Tim  
Schwerdtner (RWTH Aachen University, Germany)*

**D16** Mixed Interaction Spaces

D-16

**- a new interaction technique for mobile devices**  
*Thomas Riisgaard Hansen, Eva Eriksson, Andreas  
Lykke-Olesen (University of Aarhus, Interactive Spaces,  
Aarhus School of Architecture, Denmark)*

**D17** Abaris: Capture and Access for Structured One-on-One Educational Settings

D-17

*Sebastian Boring, Julie A. Kientz, Gregory D. Abowd,  
Gillian R. Hayes (University of Munich, Germany,  
Georgia Institute of Technology, USA)*

**D18** User Profile Acquisition, Management and Its History Visualization via a Cell Phone

D-18

*Daisuke Morikawa, Masaru Honjo, Akira Yamaguchi,  
Masayoshi Ohashi (KDDI, ATR, Japan)*

**D19** Digitally Enhanced Home Activities with u-Textures

D-19

*Ryo Ohsawa, Takuro Yonezawa, Yuki Matsukura, Naohiko  
Kohtake, Kazunori Takashio and Hideyuki Tokuda  
(Graduate School of Media and Governance, Keio  
University, Japan)*

**D20** Peer-to-Peer Positioning of Co-located Mobile Devices

D-20

*Mike Hazas, Christian Kray, Henoc Agbota, Hans  
Gellersen, Gerd Kortuem (Computing Department,  
Lancaster University, UK)*

**D21** A Position Detection Mechanism using Camera Images for Pin&Play

D-21

*Yasue Kishino, Tsutomu Terada, Shojiro Nishio, Nicolas  
Villar, Hans Gellersen (Osaka University, Japan,  
Lancaster University, UK)*

**D22** A Display Cube as a Tangible User Interface

D-22

*Albrecht Schmidt, Dominik Schmidt, Paul Holleis,  
Matthias Kranz (University of Munich, Germany)*

**D23** Displayed Connectivity

D-23

*Paul Holleis, Matthias Kranz, Albrecht Schmidt  
(University of Munich, Germany)*

**D24** Graphic Shadow Wall

D-24

*Yugo Minomo, Takeshi Naemura  
(The University of Tokyo, Japan)*

**D25** Strino: STRain-based user Interface with tactile of elastic Natural Objects

D-25

*Makoto Iida, Shoji Kawakami and Takeshi Naemura  
(The University of Tokyo, Japan)*

